

Costa Mesa Freeway (SR- 55) Access Study



SR-55 History



Environmental Impact Statement approved to extend the SR-55 from Del Mar to Industrial Way

1985

1987

Caltrans & Costa Mesa sign freeway agreement for proposed route

Costa Mesa requests OCTA conduct a study of the SR-55 Access study area from 19th Street to Industrial Way

2005

2007

OCTA initiates SR-55 Access study

Planned Freeway Extension as shown in the 1987 Freeway Agreement



- SR-55 ends at 19th Street in Costa Mesa
- Caltrans plans include future extension of the SR-55 from 19th Street to Industrial Way¹
- Extension was environmentally approved as part of the Del Mar Ave. to 19th Street freeway project in 1985
- Freeway was not completed south of 19th Street due to funding and community impact issues

¹ Source: California Department of Transportation, Freeway Agreement, Feb. 2, 1987

SR-55 Access Study Overview



- First phase of a multi-phase process to determine alternatives for SR-55 between 19th Street and Industrial Way
- Scope will develop conceptual strategies
 - Screen concepts to 3 or 4 feasible alternatives for further evaluation (follow-on study)
 - Next phases to determine “locally preferred alternative”
- Concepts & Alternatives are developed with input from:
 - Technical staff
 - Study area elected officials
 - Stakeholder groups
 - General public

- **Learn more** about the access study
- **Have your questions answered**
- **Provide input** on conceptual strategies to reduce congestion along Newport Blvd. at the end of the SR-55

Why We Are Studying SR-55



- Freeway ends before route terminus
- 100,000 daily vehicles travel on arterial streets
- Local street traffic
- Congestion between 19th and 17th streets
- Major impacts with current planned freeway extension
- Projected traffic volume growth 15% by 2030

Study Purpose

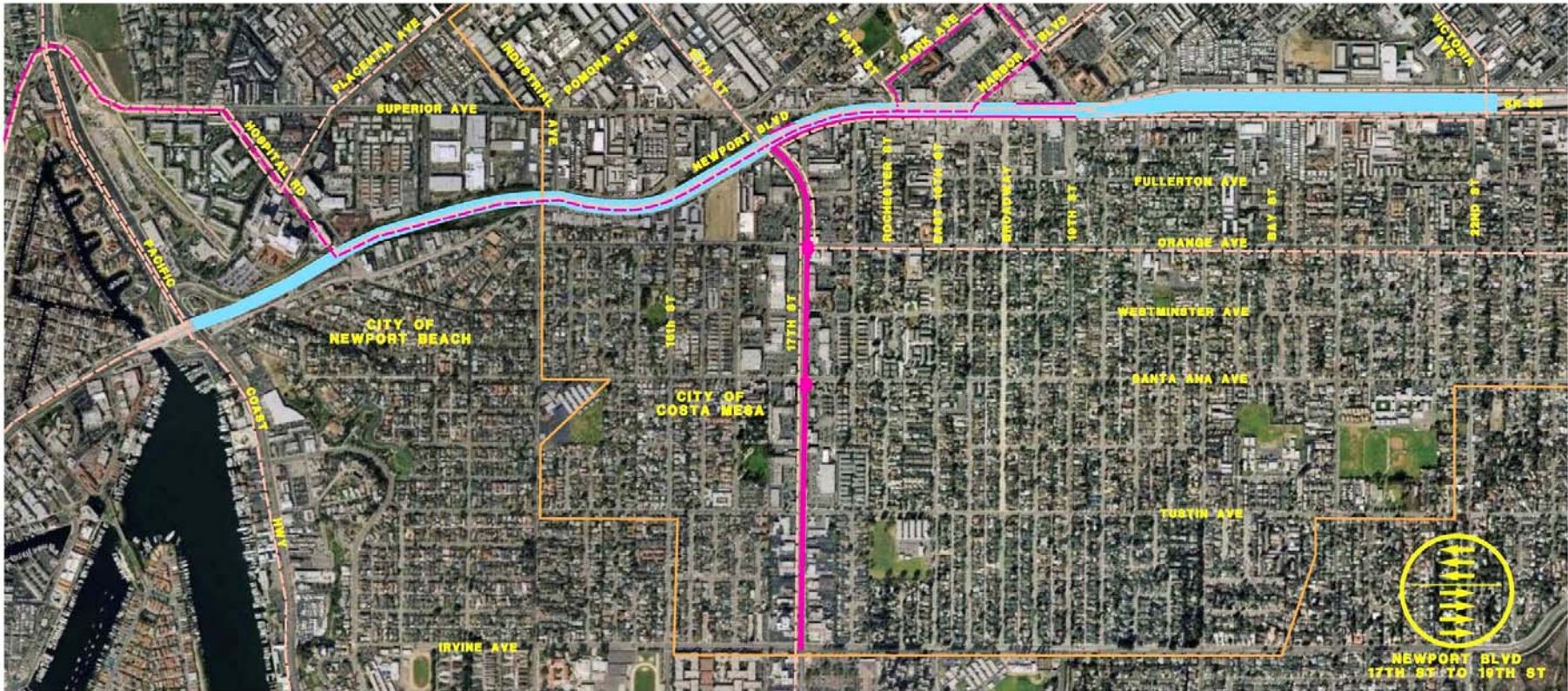
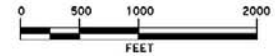


- **Improve** mobility and reduce existing and future congestion
- **Minimize** environmental and traffic impacts
- **Manage** regional traffic impacts to local streets
- **Consider** existing and planned transit programs such as bus rapid transit
- **Enhance** system linkage and connectivity according to local and regional plans

No Build / Baseline



NO BUILD/BASELINE ALTERNATIVE



LEGEND

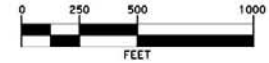
- EXISTING SR-55/NEWPORT BLVD
- CITY STREET IMPROVEMENTS
- CITY LIMITS
- EXISTING OCTA BUS ROUTES
- PROPOSED BRT ROUTES

COMPONENTS

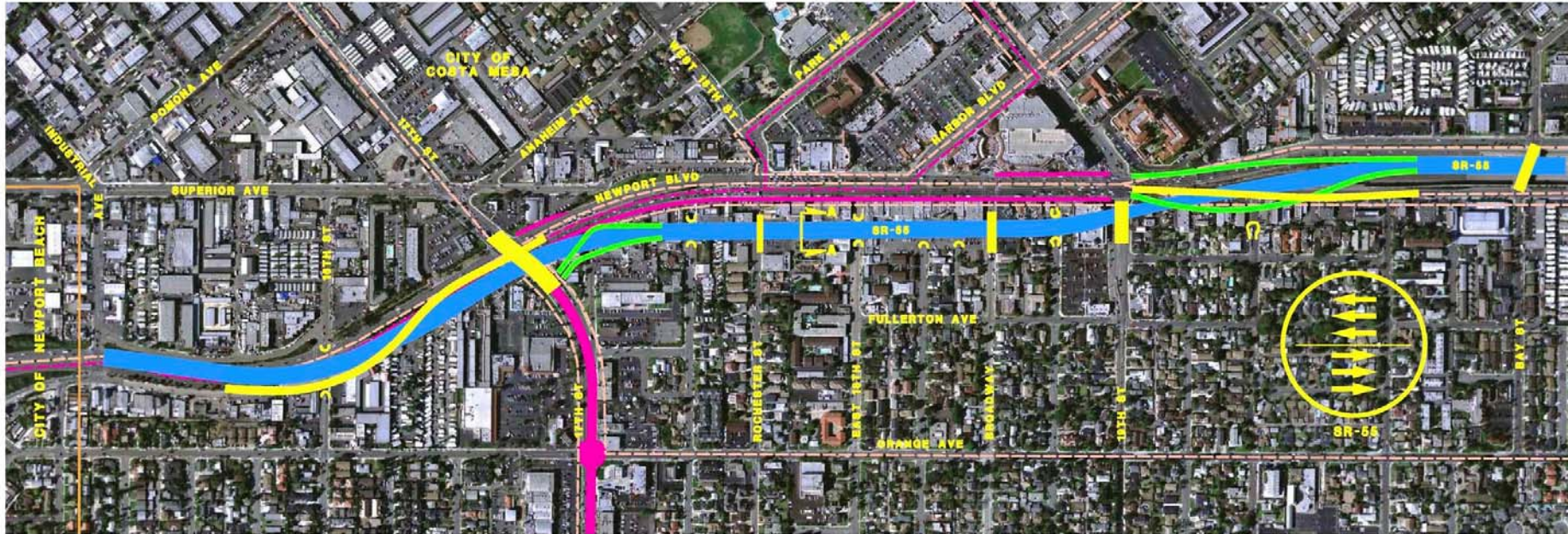
- | | |
|---|--|
| <ul style="list-style-type: none"> 1 MAINTAIN SR-55/NEWPORT BLVD IN EXISTING CONDITION. 2 4 NB LANES ON NEWPORT BLVD FROM 17TH ST TO 19TH ST. 3 3 SB LANES ON NEWPORT BLVD FROM BROADWAY TO 17TH ST. 4 ADD 4th SB LANE ON NEWPORT BLVD FROM 19TH TO BROADWAY. | <ul style="list-style-type: none"> 5 ADD SB RIGHT TURN LANE ON NEWPORT BLVD AT 17TH ST. 6 IMPROVE ORANGE/17TH ST AND SANTA ANA/17TH ST INTERSECTIONS. 7 IMPROVE MOBILITY THROUGH 17TH ST. 7 ENHANCE EXISTING BUS ROUTES WITH BRT ROUTES. |
|---|--|

SR-55 ACCESS STUDY
NO BUILD/BASELINE

Current Freeway Plan (Easterly Freeway Extension)

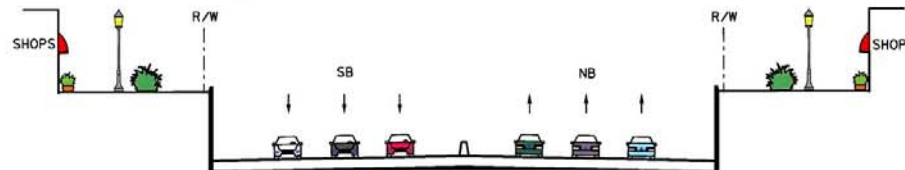


CURRENT FREEWAY PLAN (EASTERLY FREEWAY EXTENSION)



LEGEND

- █ PROPOSED FREEWAY EXTENSION
- █ PROPOSED STREET IMPROVEMENTS
- █ PROPOSED RAMP
- █ BASELINE IMPROVEMENTS
- █ CITY LIMITS
- █ EXISTING OCTA BUS ROUTES
- █ PROPOSED BRT ROUTES



REALIGNED SR-55 FREEWAY
TYPICAL SECTION A-A
NOT TO SCALE

COMPONENTS

- 1** REALIGN/EXTEND SR-55 FREEWAY TO THE EAST OF EXISTING NEWPORT BLVD FROM INDUSTRIAL AVE TO JUST SOUTH OF BAY ST AS DEPRESSED FREEWAY, THREE LANES EACH DIRECTION.
- 2** PROVIDE STREET OVERCROSSINGS.
- 3** PROVIDE INTERCHANGES AT 17TH ST AND 19TH ST.

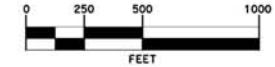
IMPACTS

- █ RELOCATION OF 85 RESIDENTIAL UNITS AND 40 BUSINESSES
- █ HIGH PROJECT COST

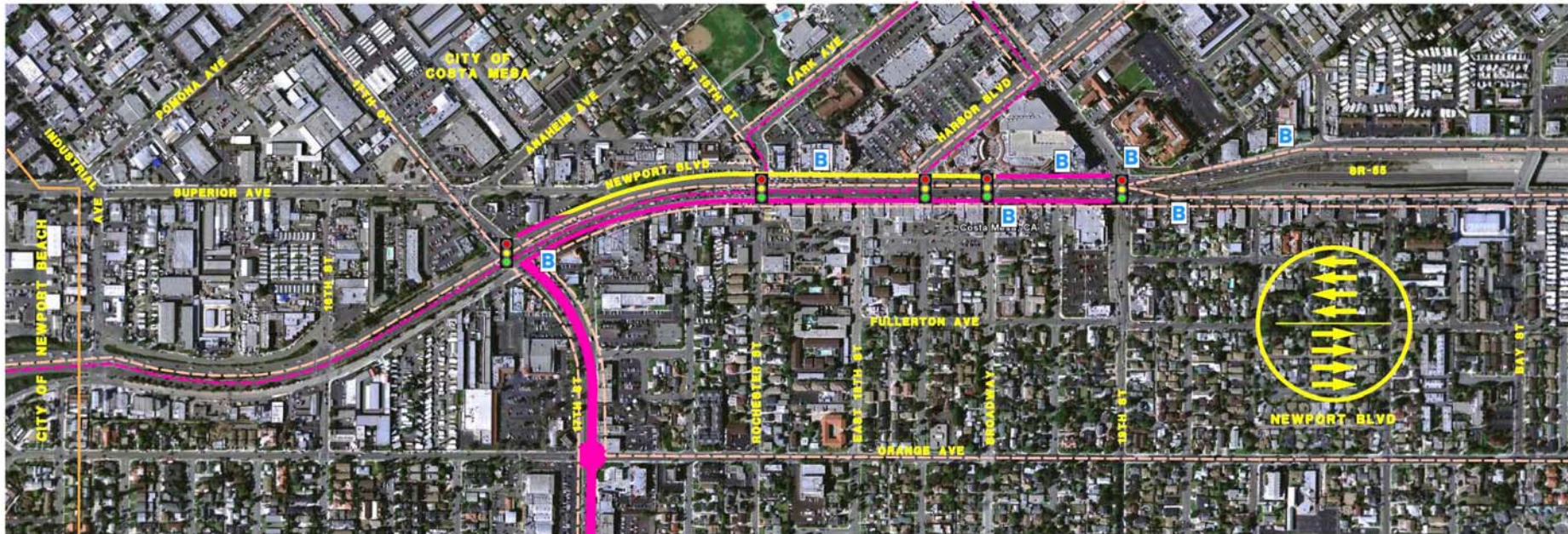
SR-55 ACCESS STUDY

CURRENT FREEWAY PLAN (EASTERLY FREEWAY EXTENSION)








Transportation System Management




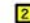

TRANSPORTATION SYSTEM MANAGEMENT ALTERNATIVE





LEGEND

-  PROPOSED STREET IMPROVEMENTS
-  BASELINE IMPROVEMENTS
-  CITY LIMITS
-  EXISTING OCTA BUS ROUTES
-  PROPOSED BRT ROUTES
-  PROPOSED SIGNAL TIMING MODIFICATIONS
-  EXISTING BUS STOPS

COMPONENTS

-  ADD ONE SB LANE TO MAINTAIN 4 NB AND SB LANES ON NEWPORT BLVD AS CONVENTIONAL HIGHWAY FROM 19TH ST TO 17TH ST.
-  ADD BUS TURNOUTS.
-  MODIFY SIGNAL TIMING AT INTERSECTIONS.

IMPACTS

-  POTENTIAL LOSS OF STREET PARKING
-  ADDITIONAL RIGHT OF WAY REQUIRED

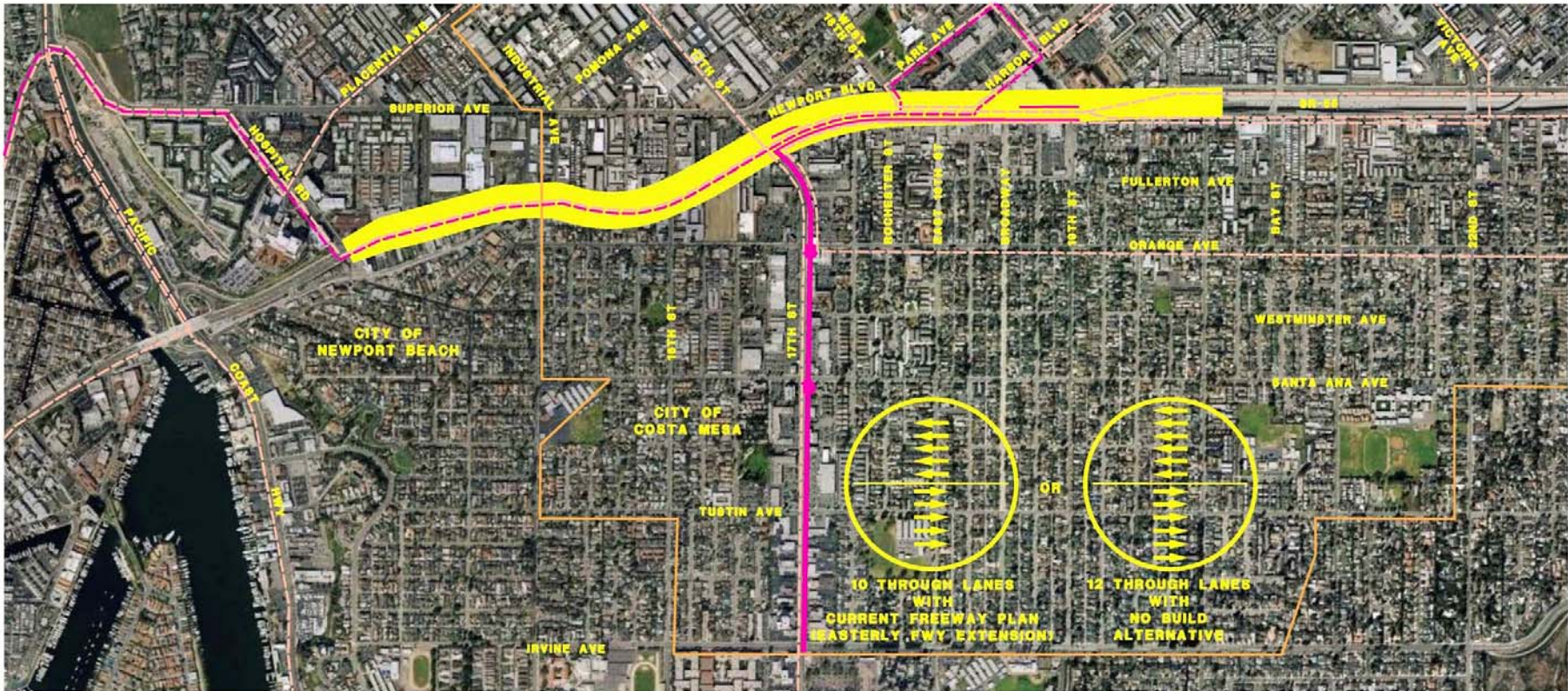
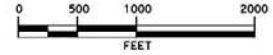
SR-55 ACCESS STUDY

TRANSPORTATION SYSTEM MANAGEMENT

Improved Conventional Highway (Newport Blvd. Only)



IMPROVED CONVENTIONAL HIGHWAY ALTERNATIVE (NEWPORT BOULEVARD ONLY)



- LEGEND**
- ▬ PROPOSED STREET IMPROVEMENTS
 - ▬ BASELINE IMPROVEMENTS
 - ▬ CITY LIMITS
 - ▬ EXISTING OCTA BUS ROUTES
 - ▬ PROPOSED BRT BUS ROUTES

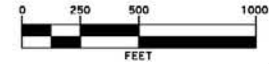
- COMPONENTS**
- 1** IMPROVE MOBILITY THROUGH CORRIDOR KEEPING NEWPORT BLVD AS CONVENTIONAL HIGHWAY FROM 19TH ST TO HOSPITAL WAY.
 - 2** ADD LANES TO NEWPORT BLVD TO IMPROVE OPERATIONAL LEVEL OF SERVICE TO "D" OR BETTER.

- IMPACTS**
- SEVERE RESIDENTIAL AND BUSINESS IMPACTS
 - HIGH PROJECT COST

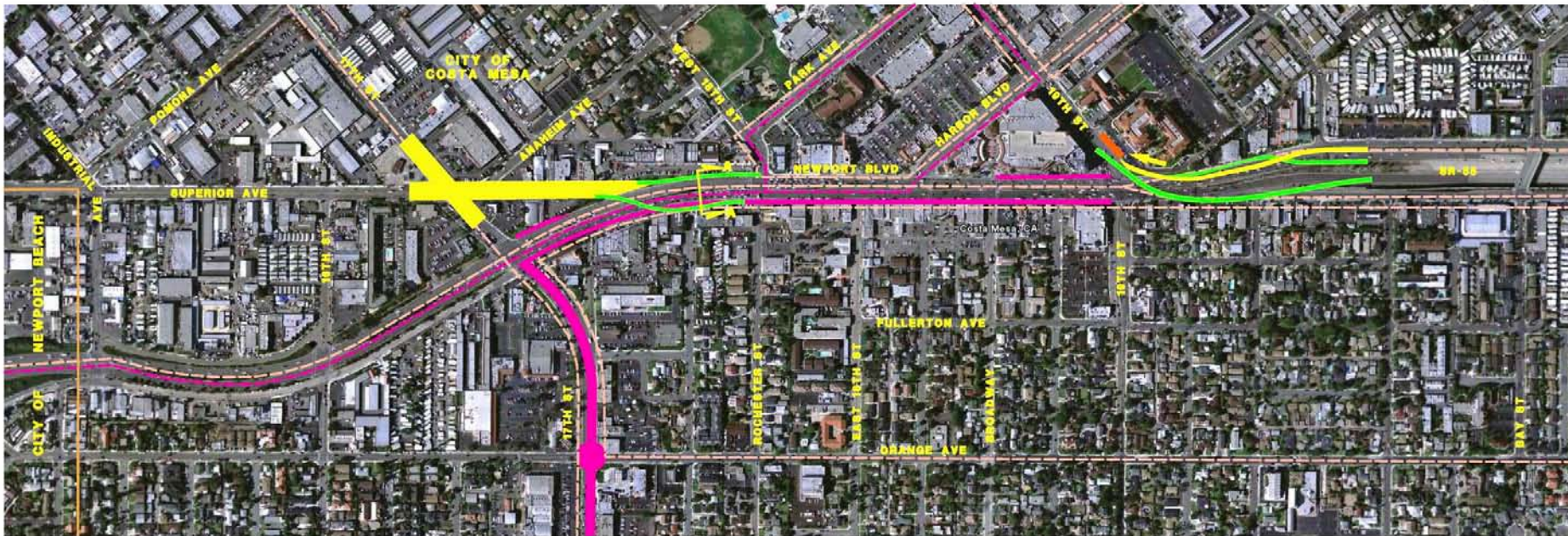
SR-55 ACCESS STUDY

IMPROVED CONVENTIONAL HIGHWAY (NEWPORT BOULEVARD ONLY)

Vertical Terminal Enhancement



VERTICAL TERMINAL ENHANCEMENT



LEGEND

- PROPOSED STREET IMPROVEMENTS
- PROPOSED RAMPS
- BASELINE IMPROVEMENTS
- CITY LIMITS
- EXISTING OCTA BUS ROUTES
- PROPOSED BRT ROUTES



TYPICAL SECTION A-A
NOT TO SCALE

COMPONENTS

- 1** IMPROVE MOBILITY TO 19TH ST ON THE WEST SIDE OF NEWPORT BLVD:
 - ADD RAMP BRAID AT SB NEWPORT BLVD TIE-IN AT SR-55.
 - ADD FREE RIGHT FROM 19TH ST TO NEWPORT BLVD BY RELOCATING EXISTING BUS TURNOUT TO THE WEST.
 - ADD EB 19TH ST TO NB SR-55 FLYOVER.
- 2** IMPROVE MOBILITY AT 17TH ST ON THE WEST SIDE OF NEWPORT BLVD:
 - SIGNIFICANT GEOMETRIC IMPROVEMENTS AT NEWPORT/17TH/ SUPERIOR INTERSECTION.
 - PARTIAL WIDENING ALONG SUPERIOR AVE MAY BE REQUIRED.

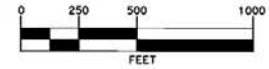
IMPACTS

- VISUAL IMPACTS
- ADDITIONAL RIGHT OF WAY REQUIRED
- MODERATE PROJECT COST

SR-55 ACCESS STUDY

VERTICAL TERMINAL ENHANCEMENT

Freeway Elevated (Over Newport Blvd.)

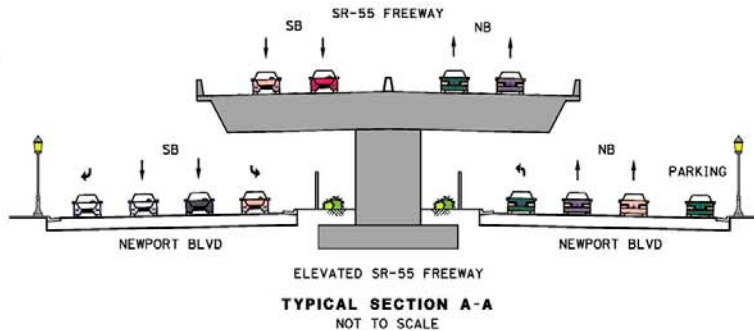


FREeway ELEVATED OVER NEWPORT BOULEVARD ALTERNATIVE



LEGEND

- █ PROPOSED ELEVATED FREEWAY
- █ PROPOSED STREET IMPROVEMENTS
- █ BASELINE IMPROVEMENTS
- █ PROPOSED RAMPS
- █ CITY LIMITS
- █ EXISTING OCTA BUS ROUTES
- █ PROPOSED BRT ROUTES



COMPONENTS

- █ SR-55 FREEWAY ELEVATED OVER NEWPORT BLVD FROM 19TH ST TO INDUSTRIAL WAY.
- █ CONTROLLED ACCESS FREEWAY OVER NEWPORT BLVD.
- █ SIDE STREET ACCESS FROM NEWPORT BLVD.
- █ PROVIDE INTERCHANGE AT 19TH ST.

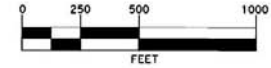
IMPACTS

- █ HIGH PROJECT COST
- █ ENVIRONMENTALLY SENSITIVE ALTERNATIVE

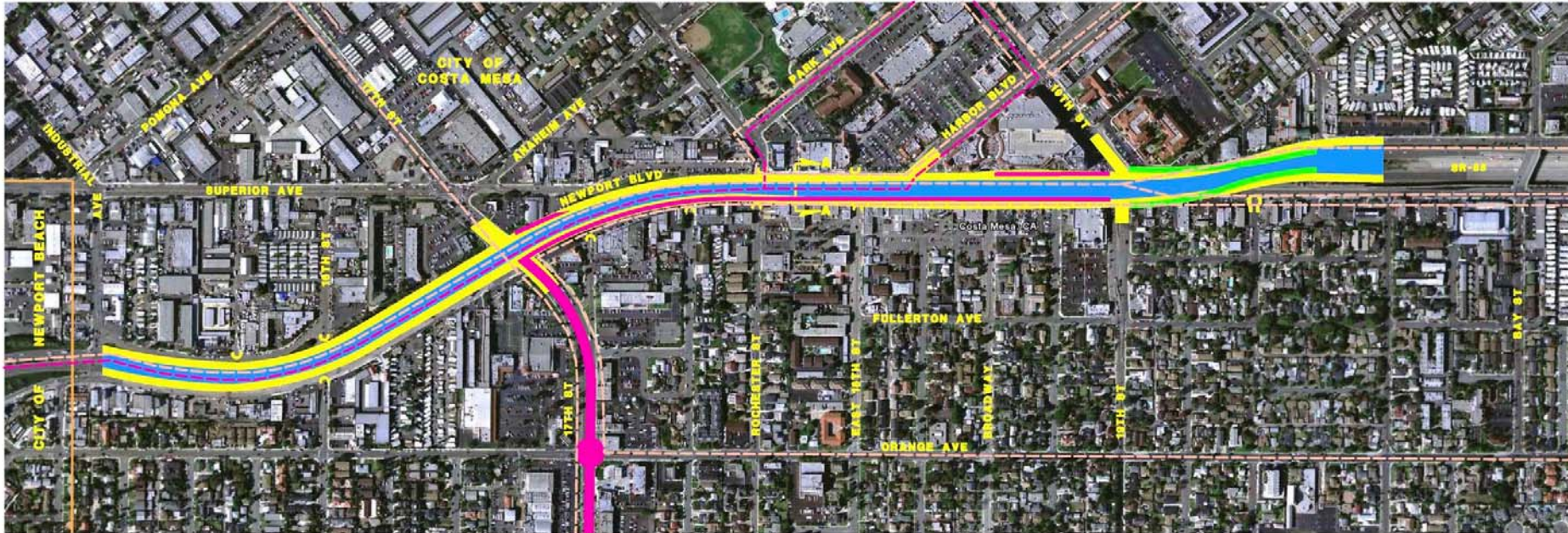
SR-55 ACCESS STUDY

FREeway ELEVATED OVER NEWPORT BOULEVARD

Cut / Cover Freeway (Along Newport Blvd.)

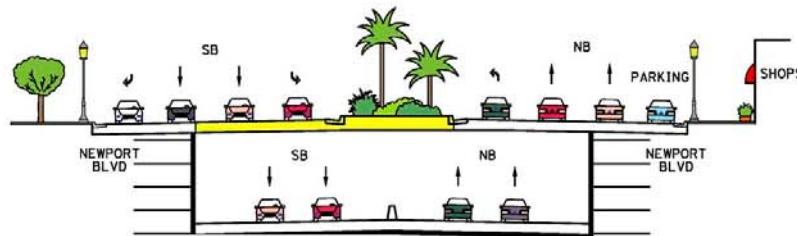


CUT/COVER FREEWAY ALONG NEWPORT BOULEVARD ALTERNATIVE



LEGEND

- ▬ PROPOSED FREEWAY EXTENSION
- ▬ PROPOSED STREET IMPROVEMENTS
- ▬ PROPOSED RAMPS
- ▬ BASELINE IMPROVEMENTS
- ▬ CITY LIMITS
- ▬ EXISTING OCTA BUS ROUTES
- ▬ PROPOSED BRT ROUTES



COMPONENTS

- 1** CUT AND COVER SR-55 FREEWAY ALONG NEWPORT BLVD FROM 19TH ST TO INDUSTRIAL WAY.
- 2** CONTROLLED ACCESS FREEWAY UNDER NEWPORT BLVD.
- 3** SIDE STREET ACCESS FROM NEWPORT BLVD.
- 4** PROVIDE INTERCHANGE AT 19TH ST.

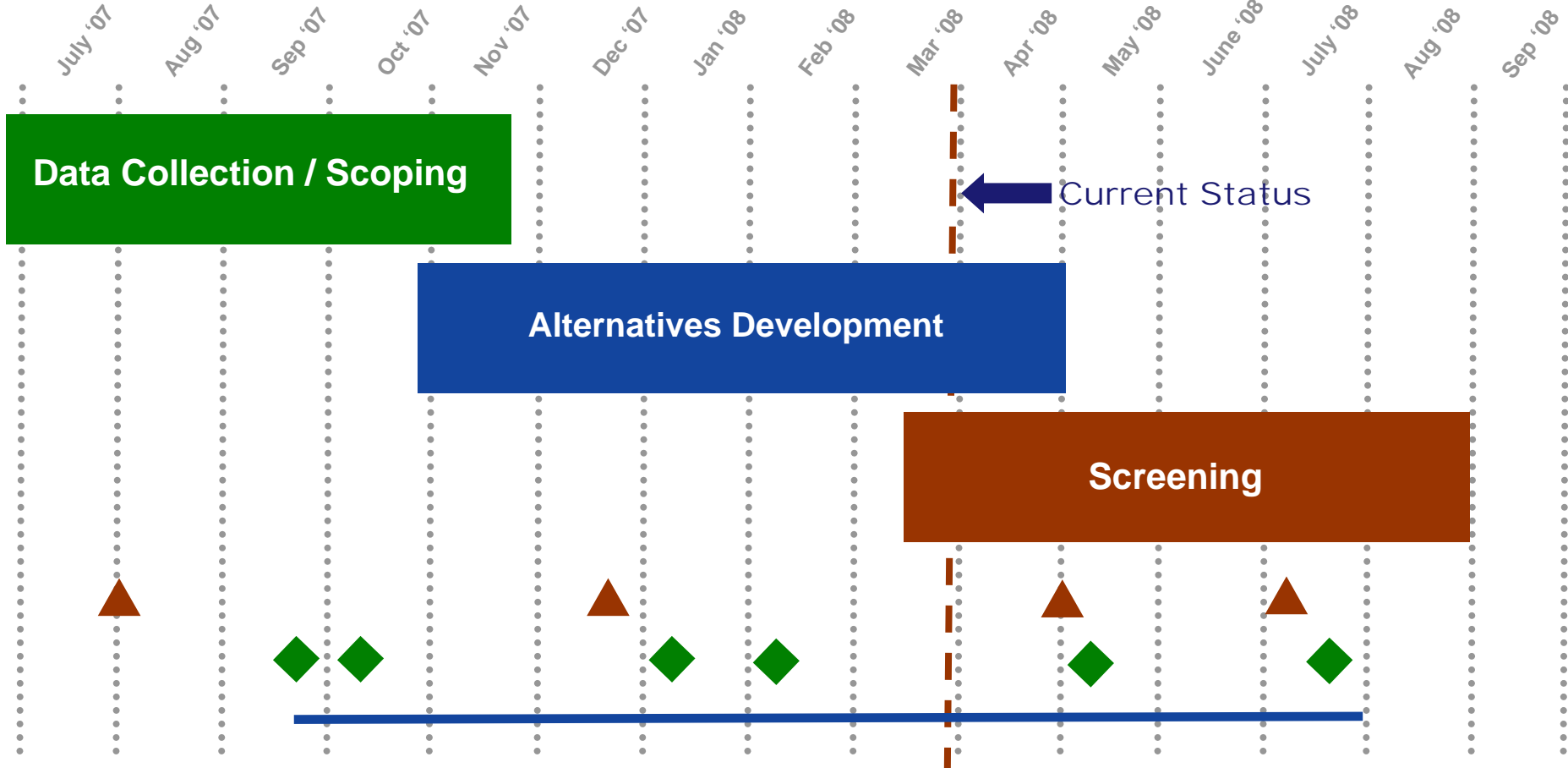
IMPACTS

- HIGH PROJECT COST

SR-55 ACCESS STUDY

CUT/COVER FREEWAY ALONG NEWPORT BOULEVARD

Study Schedule



- ▲ Technical Advisory / Project Development Team Meeting
- ◆ Elected Officials Briefing
- Public Outreach Ongoing – stakeholder groups and general public

- **Incorporate** public input into final conceptual alternatives
- **Evaluate** conceptual alternatives – screen down to 3 or 4 most feasible alternatives
 - Reduced set of alternatives may be “hybrids” or incorporating public input and best features of several conceptual alternatives
- **Complete** phase 1 of study by fall 2008